

STUDENT DROP-OFF & PICK-UP AT BRIGHOUSE MAY 2023

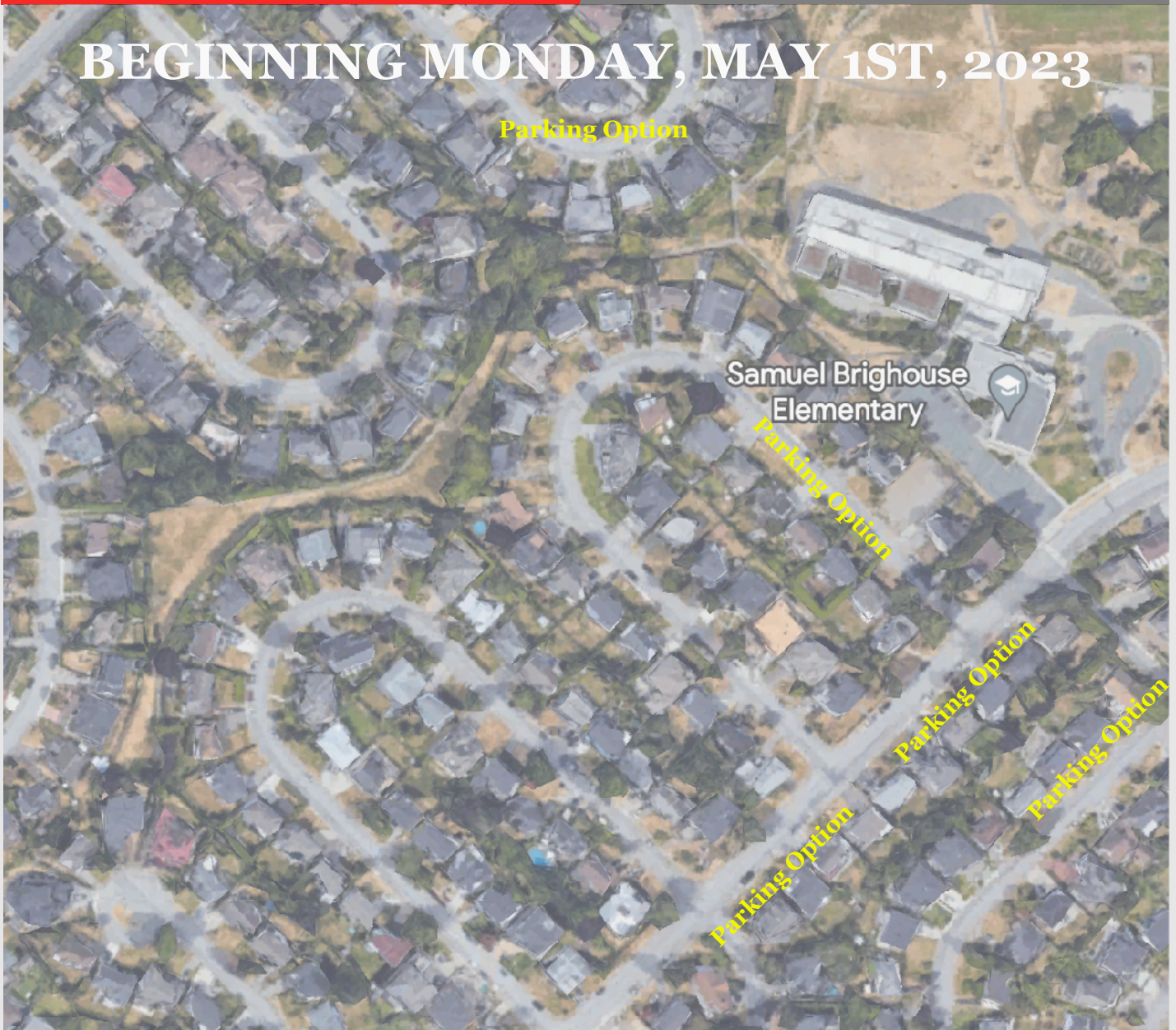
RATIONALE

- The student population at Brighthouse continues to grow
- The volume of vehicle traffic in the morning and afternoon is very high
- There is very limited marked parking space in the traffic circle
- Even if/when all families/drivers follow the current “rules” it just doesn’t work, there are simply too many cars

EXPERIMENT/PROPOSAL

- Vehicle traffic is limited to drop-off and pickup only: before 9:00a and 2:30p to 3:00p (*No Parking will be possible*)
- Drivers will be asked to move forward as space is available, in one lane only
- All vehicles must exit the traffic circle with a right hand turn (*a traffic rule already in place*)
- Drop-off / Pick-up along outside barriers
- **Vehicles cannot be left unattended**

BEGINNING MONDAY, MAY 1ST, 2023



OPTIONS - CONSIDERATIONS

- Continue to use the Traffic Circle for Drop-off and Pick-up without leaving your vehicle (*a similar approach to the airport*)
- If parking is necessary you will need to find an alternate parking location in the neighbourhood surrounding the school, please use this time to explore the best locations
- We strongly encourage students and families to use “active” transportation - walking or cycling
- For Pick-up we suggest arriving a few minutes after dismissal so that your child is waiting for their ride rather than cars waiting for children to be dismissed
- We will have Morning Arrival Helpers on hand to walk children to classroom doors
- We have worked with our Board Facilities Dept on the initial arrangements, feedback from families will be solicited after May 23rd